

# What's the difference between a well-fed dog or a dog who is fed too well? Their Healthy Years!

## PURINA LIFE SPAN STUDY\*

**1<sup>ST</sup>**

First completed study of its kind to last the entire life span of dogs

**14**

14-year study conducted at Purina Pet Care Center in Missouri

**48**

48 Labrador Retrievers were paired, then randomly placed in two different groups

**100%**

All dogs received the same 100% nutritionally complete and balanced foods – only the amount differed

**1<sup>ST</sup>**

First completed study to document that feeding to an ideal body condition over a lifetime extends healthy years in mammals larger than rodents

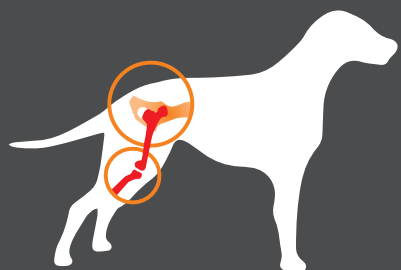
In the study, we found that restricted-fed dogs experienced:



Extended healthy years by an average of 1.8 years



Delayed need for treatment for chronic conditions by approximately 2 years



Delayed need for long-term treatment of osteoarthritis by 3 years



Healthier blood sugar levels



Ask your veterinarian what your pet's ideal body condition is, and how you can help your pet achieve and maintain it.